

**SCREENING REPORT FOR AN ENVIRONMENTAL AUTHORIZATION AS
REQUIRED BY THE 2014 EIA REGULATIONS – PROPOSED SITE
ENVIRONMENTAL SENSITIVITY**

EIA Reference number: 024023

Project name: Proposed housing development, Farm 1388, Kuils River, Western Cape.

Project title: Proposed housing development, Farm 1388, Kuils River, Western Cape.

Date screening report generated: 24/03/2025 11:35:14

Applicant: Azalae Ventures (Pty) Ltd

Compiler: Sillito Environmental Consulting

Compiler signature:
.....

Application Category: Any activities within or close to a watercourse

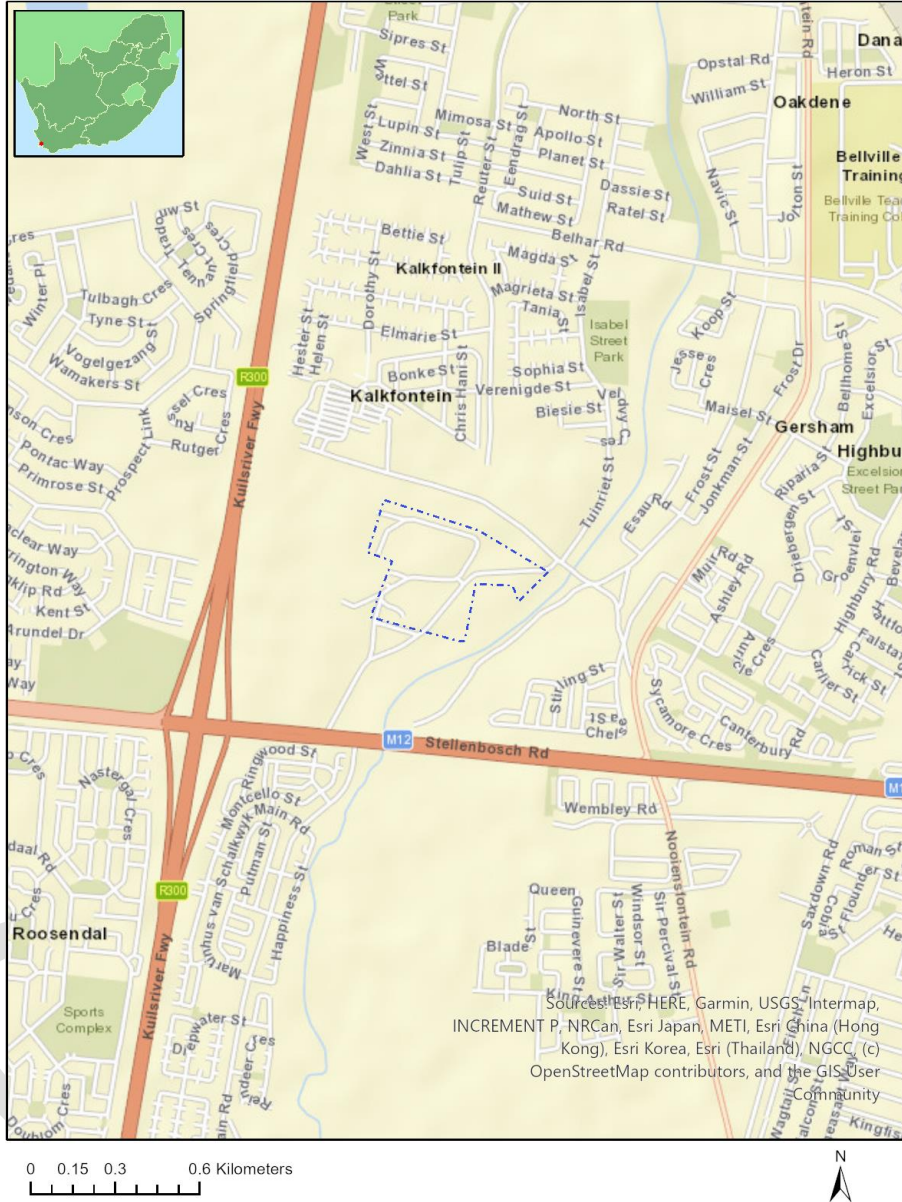
Table of Contents

- Proposed Project Location 3
 - Orientation map 1: General location 3
- Map of proposed site and relevant area(s) 4
 - Cadastral details of the proposed site 4
 - Wind and Solar developments with an approved Environmental Authorisation or applications under consideration within 30 km of the proposed area 5
 - Environmental Management Frameworks relevant to the application 5
- Environmental screening results and assessment outcomes 5
 - Relevant development incentives, restrictions, exclusions or prohibitions 5
 - Proposed Development Area Environmental Sensitivity 5
 - Specialist assessments identified 6
- Results of the environmental sensitivity of the proposed area 7
 - MAP OF RELATIVE AGRICULTURE THEME SENSITIVITY 7
 - MAP OF RELATIVE ANIMAL SPECIES THEME SENSITIVITY 8
 - MAP OF RELATIVE AQUATIC BIODIVERSITY THEME SENSITIVITY 9
 - MAP OF RELATIVE ARCHAEOLOGICAL AND CULTURAL HERITAGE THEME SENSITIVITY 10
 - MAP OF RELATIVE CIVIL AVIATION THEME SENSITIVITY 11
 - MAP OF RELATIVE DEFENCE THEME SENSITIVITY 12
 - MAP OF RELATIVE PALEONTOLOGY THEME SENSITIVITY 13
 - MAP OF RELATIVE PLANT SPECIES THEME SENSITIVITY 14
 - MAP OF RELATIVE TERRESTRIAL BIODIVERSITY THEME SENSITIVITY 17

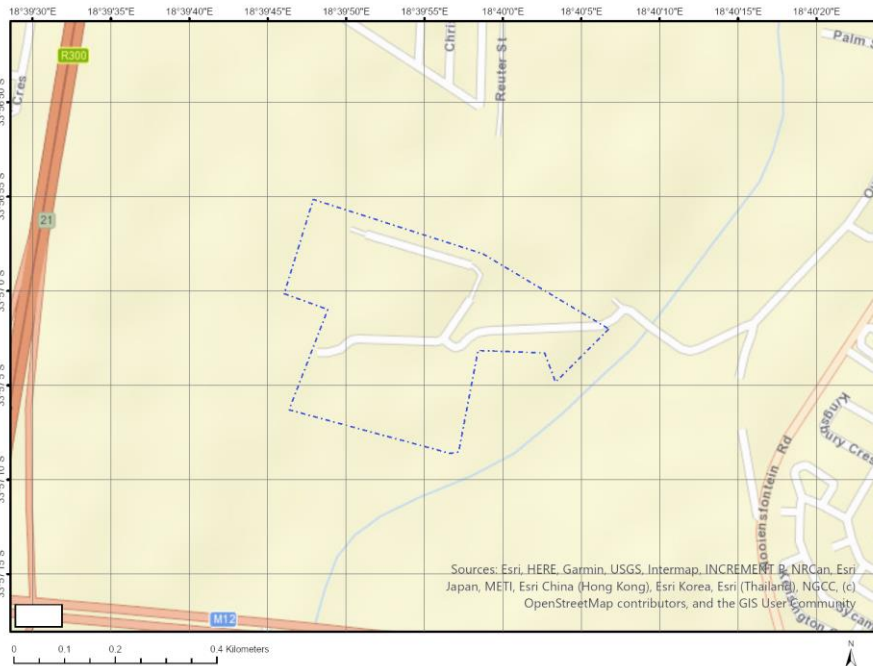
Proposed Project Location

Orientation map 1: General location

General Orientation: Proposed housing development, Farm 1388, Kuils River, Western Cape.



Map of proposed site and relevant area(s)



Cadastral details of the proposed site

Property details:

No	Farm Name	Farm/ Erf No	Portion	Latitude	Longitude	Property Type
1	KUILS RIVER (STELLENBOSCH)	22180	0	33°56'54.26S	18°40'5.84E	Erven
2	KUILS RIVER (STELLENBOSCH)	22180	0	33°56'54.03S	18°40'5.88E	Erven
3	KUILS RIVER (STELLENBOSCH)	25559	0	33°57'4.04S	18°40'6.19E	Erven
4		1399	0	33°57'9.99S	18°39'58.49E	Farm
5		1388	0	33°57'0.55S	18°39'47.34E	Farm
6		522	0	33°56'54.45S	18°39'51.11E	Farm Portion
7		1388	2	33°57'8.64S	18°39'57.04E	Farm Portion
8		1388	1	33°57'4.27S	18°40'6.17E	Farm Portion
9		1388	0	33°57'1.68S	18°39'53.74E	Farm Portion
10		1388	3	33°57'2.15S	18°39'43.38E	Farm Portion
11		1388	0	33°57'2.6S	18°39'53.76E	Farm Portion
12		1399	0	33°57'5.28S	18°39'59.74E	Farm Portion
13		1399	0	33°57'10.1S	18°39'58.59E	Farm Portion

Development footprint¹ vertices:
No development footprint(s) specified.

¹ “development footprint”, means the area within the site on which the development will take place and includes all ancillary developments for example roads, power lines, boundary walls, paving etc. which require vegetation clearance or which will be disturbed and for which the application has been submitted.

Wind and Solar developments with an approved Environmental Authorisation or applications under consideration within 30 km of the proposed area

No nearby wind or solar developments found.

Environmental Management Frameworks relevant to the application

No intersections with EMF areas found.

Environmental screening results and assessment outcomes

The following sections contain a summary of any development incentives, restrictions, exclusions or prohibitions that apply to the proposed development site as well as the most environmental sensitive features on the site based on the site sensitivity screening results for the application classification that was selected. The application classification selected for this report is:

Any activities within or close to a watercourse.

Relevant development incentives, restrictions, exclusions or prohibitions

The following development incentives, restrictions, exclusions or prohibitions and their implications that apply to this site are indicated below.

Incentive, restriction or prohibition	Implication
Strategic Transmission Corridor-Central corridor	https://screening.environment.gov.za/ScreeningDownloads/DevelopmentZones/Combined_EGI.pdf

Proposed Development Area Environmental Sensitivity

The following summary of the development site environmental sensitivities is identified. Only the highest environmental sensitivity is indicated. The footprint environmental sensitivities for the proposed development footprint as identified, are indicative only and must be verified on site by a suitably qualified person before the specialist assessments identified below can be confirmed.

Theme	Very High sensitivity	High sensitivity	Medium sensitivity	Low sensitivity
Agriculture Theme		X		
Animal Species Theme			X	
Aquatic Biodiversity Theme	X			
Archaeological and Cultural Heritage Theme				X
Civil Aviation Theme	X			
Defence Theme			X	
Paleontology Theme				X
Plant Species Theme			X	
Terrestrial Biodiversity Theme	X			

Specialist assessments identified

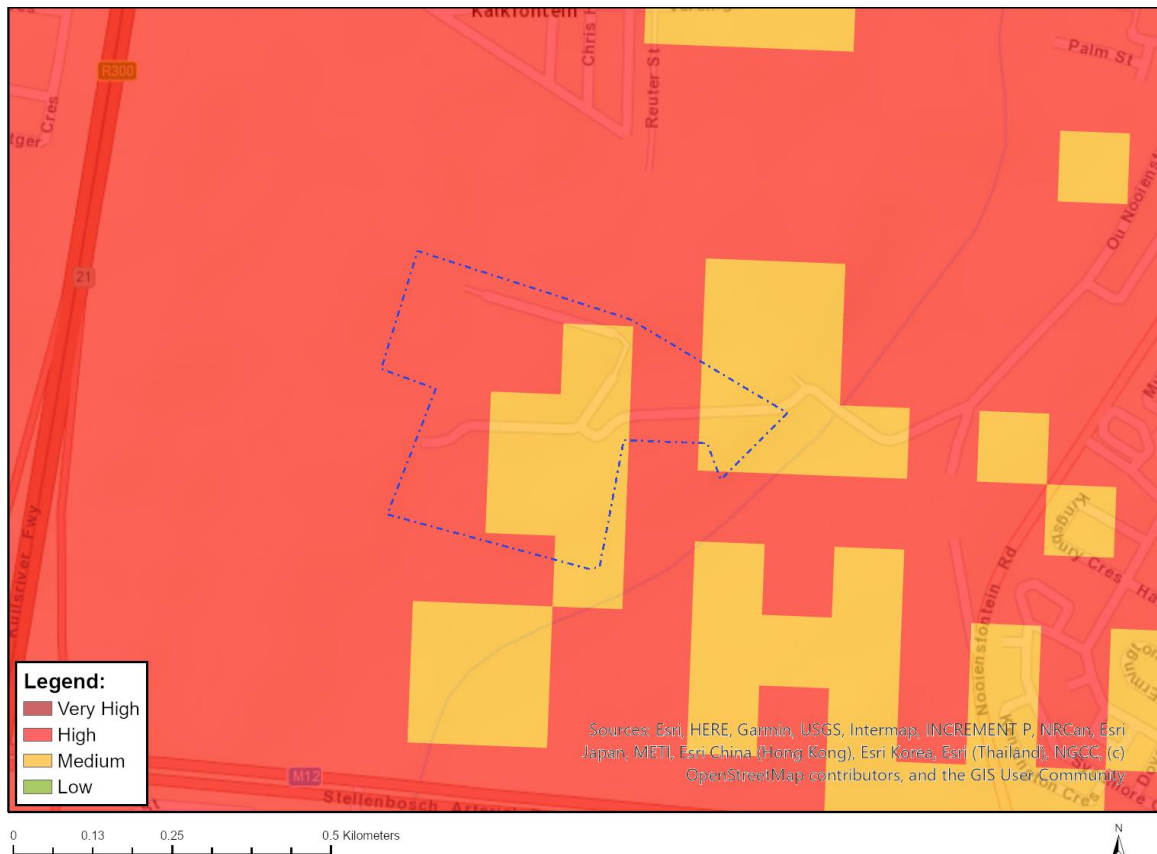
Based on the selected classification, and the known impacts associated with the proposed development, the following list of specialist assessments have been identified for inclusion in the assessment report. It is the responsibility of the EAP to confirm this list and to motivate in the assessment report, the reason for not including any of the identified specialist study including the provision of photographic evidence of the site situation.

No	Specialist assessment	Assessment Protocol
1	Landscape/Visual Impact Assessment	https://screening.environment.gov.za/ScreeningDownloads/AssessmentProtocols/Gazetted_General_Requirement_Assessment_Protocols.pdf
2	Archaeological and Cultural Heritage Impact Assessment	https://screening.environment.gov.za/ScreeningDownloads/AssessmentProtocols/Gazetted_General_Requirement_Assessment_Protocols.pdf
3	Palaeontology Impact Assessment	https://screening.environment.gov.za/ScreeningDownloads/AssessmentProtocols/Gazetted_General_Requirement_Assessment_Protocols.pdf
4	Terrestrial Biodiversity Impact Assessment	https://screening.environment.gov.za/ScreeningDownloads/AssessmentProtocols/Gazetted_Terrestrial_Biodiversity_Assessment_Protocols.pdf
5	Aquatic Biodiversity Impact Assessment	https://screening.environment.gov.za/ScreeningDownloads/AssessmentProtocols/Gazetted_Aquatic_Biodiversity_Assessment_Protocols.pdf
6	Hydrology Assessment	https://screening.environment.gov.za/ScreeningDownloads/AssessmentProtocols/Gazetted_General_Requirement_Assessment_Protocols.pdf
7	Socio-Economic Assessment	https://screening.environment.gov.za/ScreeningDownloads/AssessmentProtocols/Gazetted_General_Requirement_Assessment_Protocols.pdf
8	Plant Species Assessment	https://screening.environment.gov.za/ScreeningDownloads/AssessmentProtocols/Gazetted_Plant_Species_Assessment_Protocols.pdf
9	Animal Species Assessment	https://screening.environment.gov.za/ScreeningDownloads/AssessmentProtocols/Gazetted_Animal_Species_Assessment_Protocols.pdf

Results of the environmental sensitivity of the proposed area.

The following section represents the results of the screening for environmental sensitivity of the proposed site for relevant environmental themes associated with the project classification. It is the duty of the EAP to ensure that the environmental themes provided by the screening tool are comprehensive and complete for the project. Refer to the disclaimer.

MAP OF RELATIVE AGRICULTURE THEME SENSITIVITY

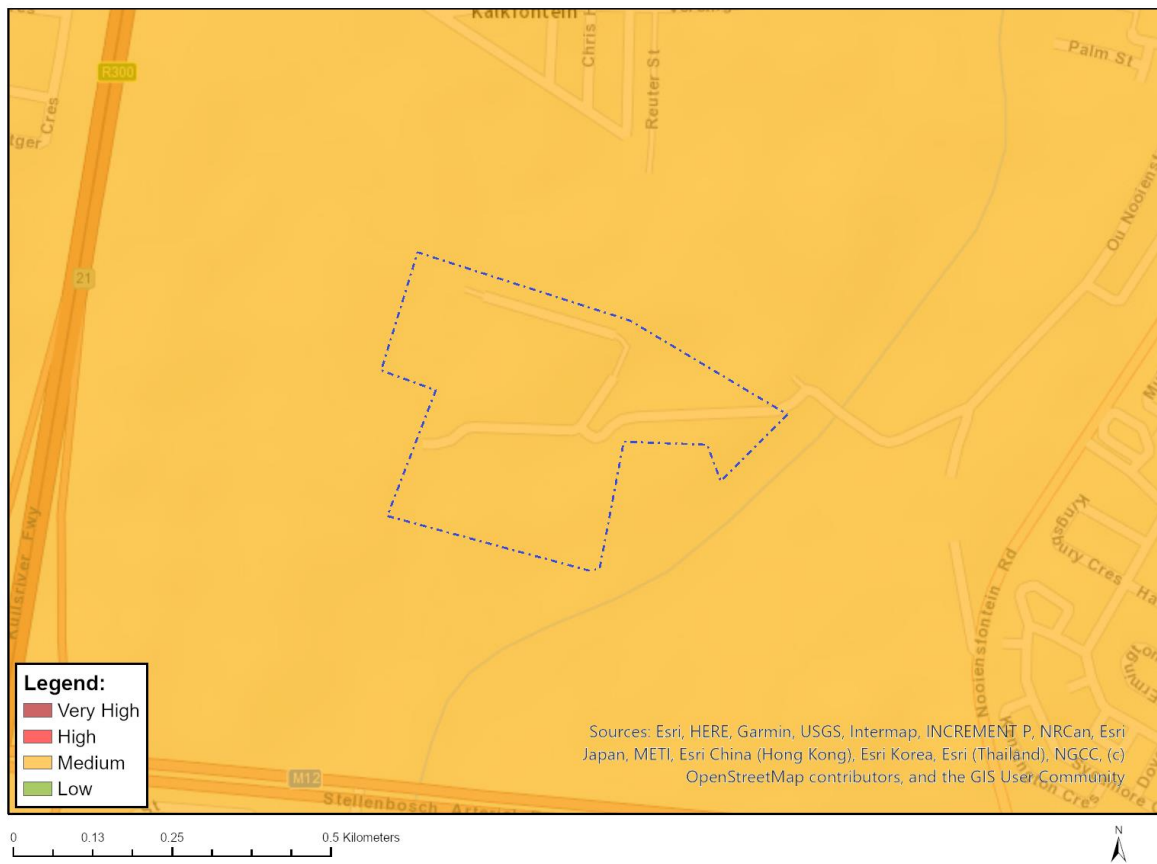


Very High sensitivity	High sensitivity	Medium sensitivity	Low sensitivity
	X		

Sensitivity Features:

Sensitivity	Feature(s)
High	08. Moderate
High	09. Moderate-High
Medium	07. Low-Moderate

MAP OF RELATIVE ANIMAL SPECIES THEME SENSITIVITY



Where only a sensitive plant unique number or sensitive animal unique number is provided in the screening report and an assessment is required, the environmental assessment practitioner (EAP) or specialist is required to email SANBI at eiadatarequests@sanbi.org.za listing all sensitive species with their unique identifiers for which information is required. The name has been withheld as the species may be prone to illegal harvesting and must be protected. SANBI will release the actual species name after the details of the EAP or specialist have been documented.

Very High sensitivity	High sensitivity	Medium sensitivity	Low sensitivity
		X	

Sensitivity Features:

Sensitivity	Feature(s)
Medium	Aves-Circus ranivorus
Medium	Invertebrate-Pachysoma aesculapius
Medium	Invertebrate-Conocephalus peringueyi
Medium	Invertebrate-Bullacris obliqua

MAP OF RELATIVE AQUATIC BIODIVERSITY THEME SENSITIVITY

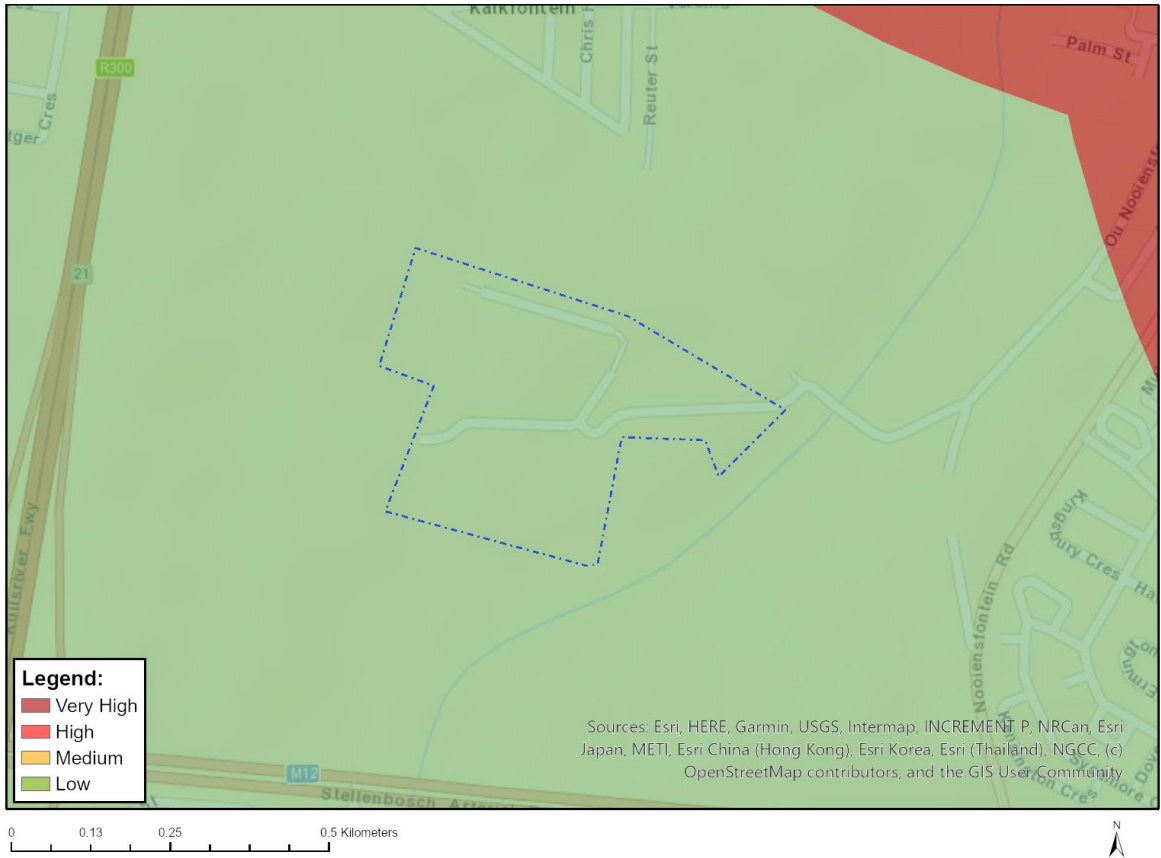


Very High sensitivity	High sensitivity	Medium sensitivity	Low sensitivity
X			

Sensitivity Features:

Sensitivity	Feature(s)
Low	Low sensitivity
Very High	Wetlands_Southwest Fynbos Bioregion (Depression)
Very High	Wetlands_Southwest Fynbos Bioregion (Seep)

MAP OF RELATIVE ARCHAEOLOGICAL AND CULTURAL HERITAGE THEME SENSITIVITY

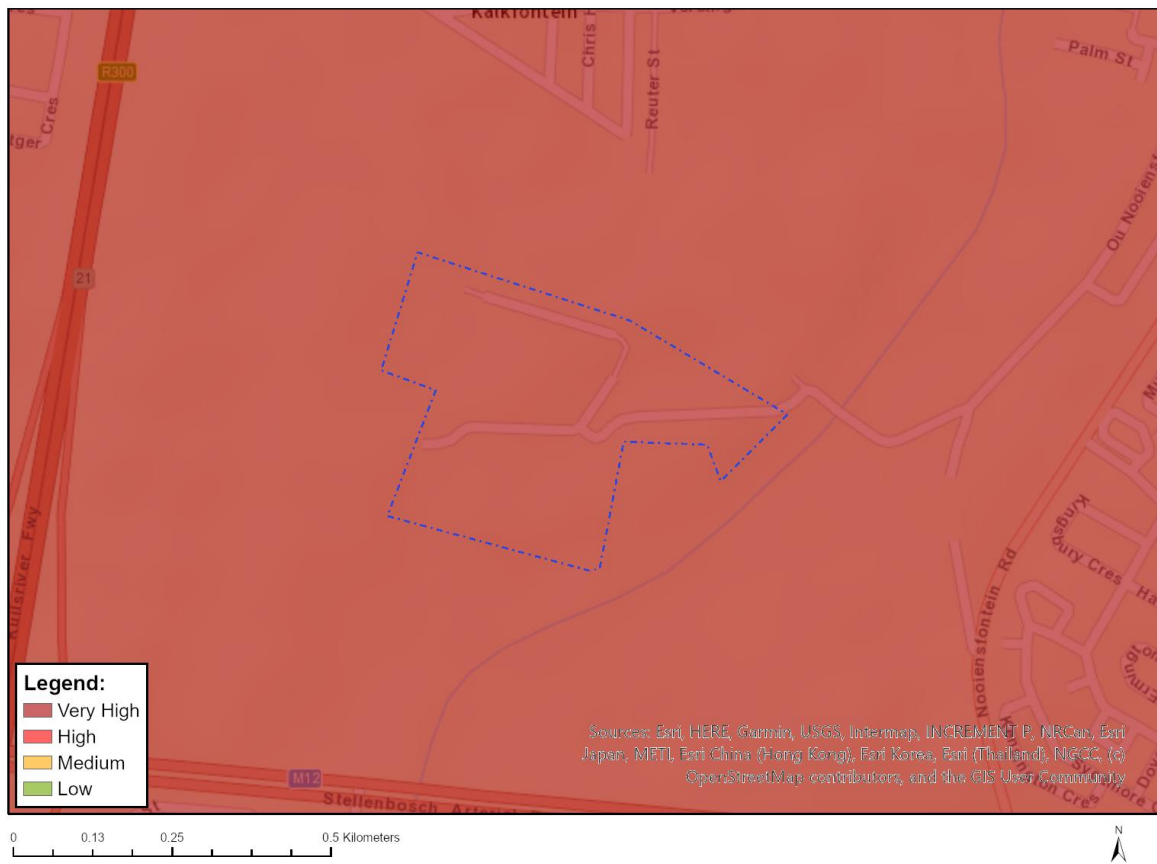


Very High sensitivity	High sensitivity	Medium sensitivity	Low sensitivity
			X

Sensitivity Features:

Sensitivity	Feature(s)
Low	Low sensitivity

MAP OF RELATIVE CIVIL AVIATION THEME SENSITIVITY

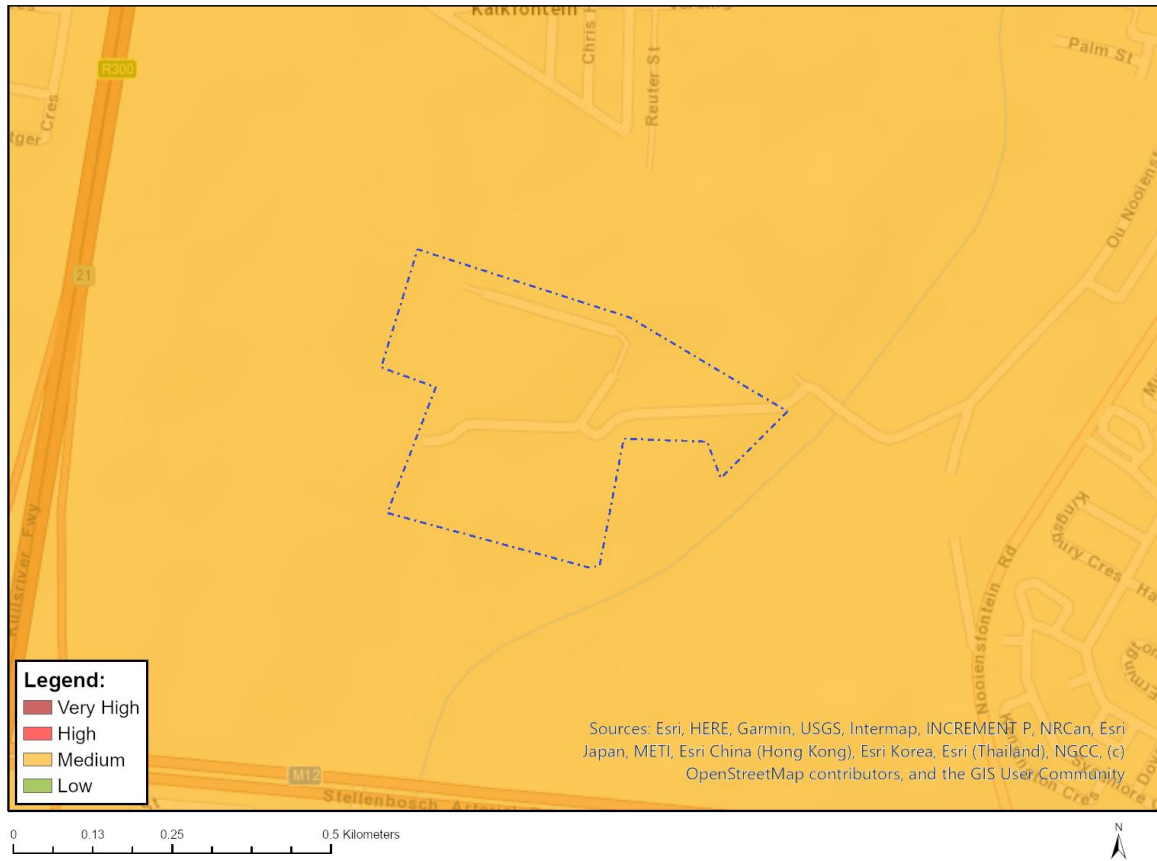


Very High sensitivity	High sensitivity	Medium sensitivity	Low sensitivity
X			

Sensitivity Features:

Sensitivity	Feature(s)
High	Within 15 km of a civil aviation radar
Medium	Between 8 and 15 km of other civil aviation aerodrome
Very High	Within 8 km of a major civil aviation aerodrome

MAP OF RELATIVE DEFENCE THEME SENSITIVITY

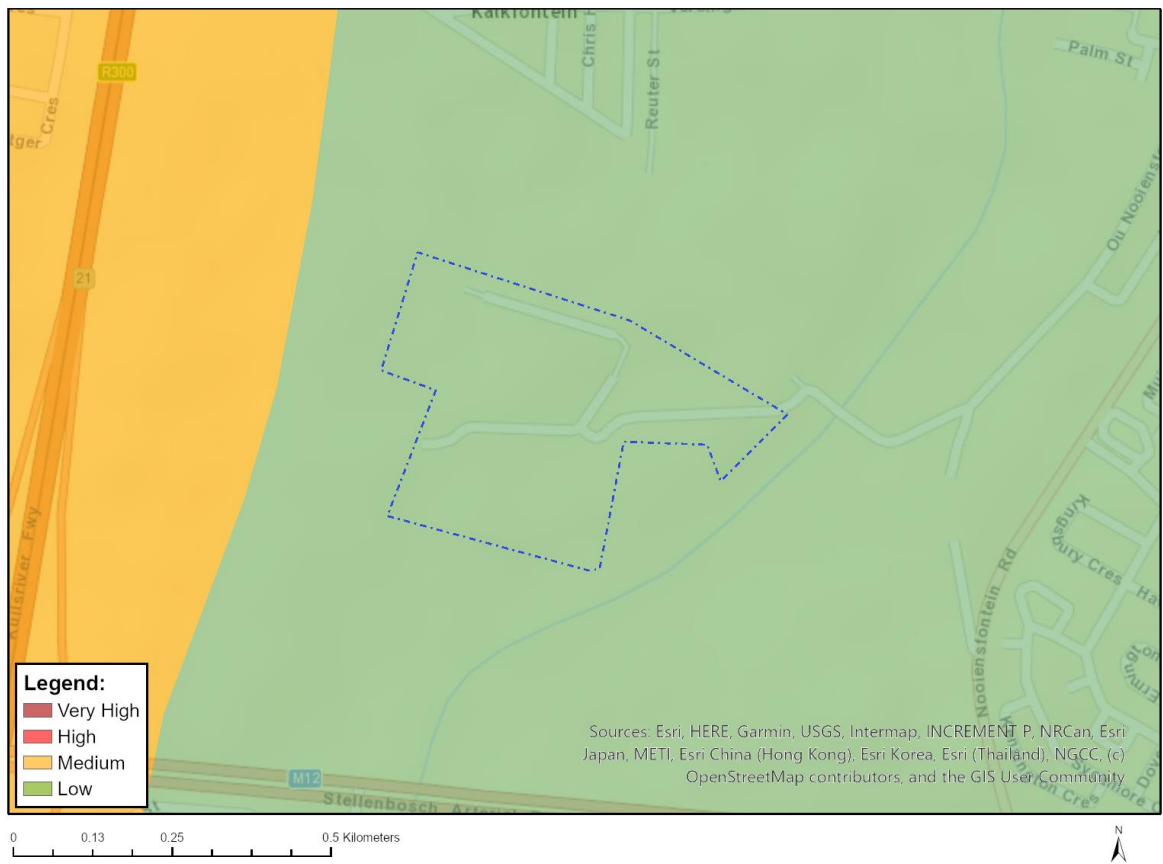


Very High sensitivity	High sensitivity	Medium sensitivity	Low sensitivity
		X	

Sensitivity Features:

Sensitivity	Feature(s)
Medium	Military and Defence Site

MAP OF RELATIVE PALEONTOLOGY THEME SENSITIVITY

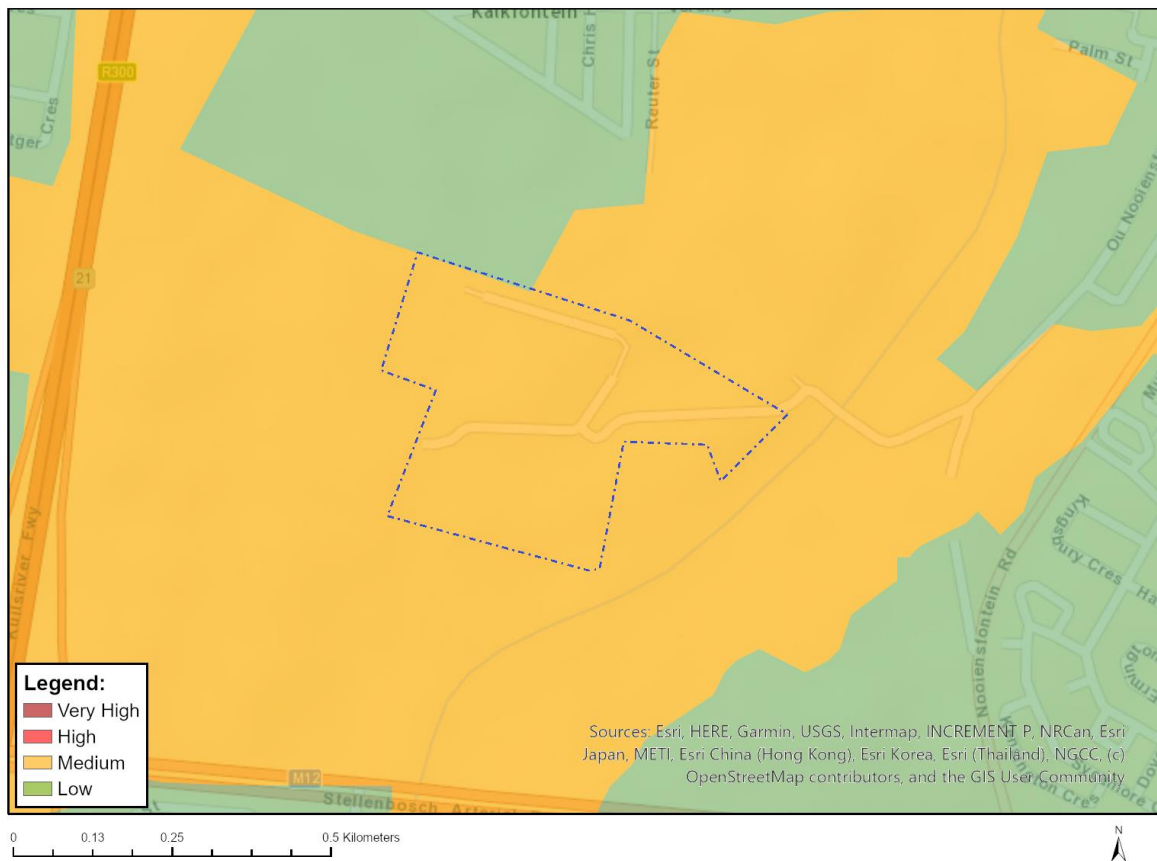


Very High sensitivity	High sensitivity	Medium sensitivity	Low sensitivity
			X

Sensitivity Features:

Sensitivity	Feature(s)
Low	Features with a Low paleontological sensitivity

MAP OF RELATIVE PLANT SPECIES THEME SENSITIVITY



Where only a sensitive plant unique number or sensitive animal unique number is provided in the screening report and an assessment is required, the environmental assessment practitioner (EAP) or specialist is required to email SANBI at eiadatarequests@sanbi.org.za listing all sensitive species with their unique identifiers for which information is required. The name has been withheld as the species may be prone to illegal harvesting and must be protected. SANBI will release the actual species name after the details of the EAP or specialist have been documented.

Very High sensitivity	High sensitivity	Medium sensitivity	Low sensitivity
		X	

Sensitivity Features:

Sensitivity	Feature(s)
Low	Low Sensitivity
Medium	Lampranthus amoenus
Medium	Lampranthus filicaulis
Medium	Lampranthus leptaleon
Medium	Lampranthus scaber
Medium	Lampranthus spiniformis
Medium	Lampranthus stenopetalus
Medium	Lampranthus stenus
Medium	Lampranthus tenuifolius
Medium	Antimima aristulata
Medium	Erepsia dunensis
Medium	Cleretum clavatum
Medium	Ruschia geminiflora

Medium	<i>Drosanthemum hispifolium</i>
Medium	<i>Lessertia argentea</i>
Medium	<i>Amphithalea ericifolia</i> subsp. <i>erecta</i>
Medium	<i>Psoralea glaucina</i>
Medium	<i>Liparia splendens</i> subsp. <i>splendens</i>
Medium	<i>Indigofera psoraloides</i>
Medium	<i>Aspalathus globulosa</i>
Medium	<i>Aspalathus muraltioides</i>
Medium	<i>Aspalathus retroflexa</i> subsp. <i>bicolor</i>
Medium	<i>Rafnia angulata</i> subsp. <i>humilis</i>
Medium	<i>Lebeckia plukenetiana</i>
Medium	<i>Podalyria argentea</i>
Medium	<i>Podalyria sericea</i>
Medium	<i>Thesium ecklonianum</i>
Medium	<i>Leucadendron cinereum</i>
Medium	<i>Leucadendron coniferum</i>
Medium	<i>Leucadendron floridum</i>
Medium	<i>Leucadendron lanigerum</i> var. <i>lanigerum</i>
Medium	<i>Leucadendron levisanus</i>
Medium	<i>Leucadendron linifolium</i>
Medium	<i>Leucospermum hypophyllocarpodendron</i> subsp. <i>canaliculatum</i>
Medium	<i>Leucospermum hypophyllocarpodendron</i> subsp. <i>hypophyllocarpodendron</i>
Medium	<i>Protea burchellii</i>
Medium	<i>Diastella proteoides</i>
Medium	<i>Serruria aemula</i>
Medium	<i>Serruria brownii</i>
Medium	<i>Microdon capitatus</i>
Medium	<i>Pentameris bachmannii</i>
Medium	<i>Pentameris pholiuroides</i>
Medium	<i>Ehrharta setacea</i> subsp. <i>uniflora</i>
Medium	<i>Anthospermum ericifolium</i>
Medium	<i>Echiostachys incanus</i>
Medium	<i>Echiostachys spicatus</i>
Medium	Sensitive species 533
Medium	Sensitive species 878
Medium	<i>Geissorhiza brehmii</i>
Medium	<i>Geissorhiza humilis</i>
Medium	Sensitive species 881
Medium	Sensitive species 683
Medium	Sensitive species 830
Medium	Sensitive species 298
Medium	Sensitive species 863
Medium	<i>Pauridia alba</i>
Medium	<i>Pauridia canaliculata</i>
Medium	<i>Pauridia pygmaea</i>
Medium	<i>Oxalis natans</i>
Medium	<i>Erica bolusiae</i> var. <i>bolusiae</i>
Medium	<i>Erica capillaris</i> var. <i>capillaris</i>
Medium	<i>Sebaea rara</i>
Medium	Sensitive species 493
Medium	<i>Tetragonia caesia</i>
Medium	<i>Adenogramma rigida</i>
Medium	<i>Wachendorfia brachyandra</i>
Medium	<i>Hessea cinnamomea</i>
Medium	<i>Isoetes capensis</i>
Medium	Sensitive species 133
Medium	<i>Isolepis inconspicua</i>
Medium	<i>Isolepis venustula</i>
Medium	<i>Trianoptiles solitaria</i>
Medium	<i>Ficinia elatior</i>

Medium	<i>Cannomois arenicola</i>
Medium	<i>Elegia prominens</i>
Medium	<i>Restio duthieae</i>
Medium	<i>Restio micans</i>
Medium	<i>Restio sabulosus</i>
Medium	<i>Restio impolitus</i>
Medium	<i>Restio papillosus</i>
Medium	<i>Restio pratensis</i>
Medium	<i>Cynanchum zeyheri</i>
Medium	Sensitive species 985
Medium	Sensitive species 120
Medium	<i>Acrolophia bolusii</i>
Medium	<i>Pterygodium cruciferum</i>
Medium	<i>Pterygodium microglossum</i>
Medium	<i>Gnidia spicata</i>
Medium	<i>Passerina paludosa</i>
Medium	<i>Lachnaea uniflora</i>
Medium	<i>Poecilolepis maritima</i>
Medium	<i>Steiroidiscus tagetes</i>
Medium	<i>Cotula eckloniana</i>
Medium	<i>Arctotis angustifolia</i>
Medium	<i>Arctotheca forbesiana</i>
Medium	<i>Diosma dichotoma</i>
Medium	<i>Agathosma corymbosa</i>
Medium	<i>Adenandra villosa</i> subsp. <i>biseriata</i>
Medium	<i>Macrostylis cassiopoides</i> subsp. <i>dregeana</i>
Medium	<i>Macrostylis villosa</i> subsp. <i>villosa</i>
Medium	<i>Cliffortia ericifolia</i>
Medium	<i>Cliffortia hirta</i>
Medium	<i>Cliffortia longifolia</i>
Medium	<i>Cliffortia marginata</i>
Medium	<i>Limonium purpuratum</i>
Medium	<i>Muraltia brevicornu</i>
Medium	<i>Muraltia macropetala</i>
Medium	<i>Muraltia mitior</i>
Medium	Sensitive species 214
Medium	Sensitive species 158
Medium	Sensitive species 1265
Medium	<i>Wurmbea inusta</i>
Medium	<i>Phylica dioica</i>
Medium	<i>Phylica harveyi</i>
Medium	<i>Phylica plumosa</i> var. <i>squarrosa</i>
Medium	<i>Phylica strigulosa</i>
Medium	<i>Phylica thunbergiana</i>
Medium	<i>Skiatophytum skiatophytoides</i>
Medium	<i>Lampranthus debilis</i>
Medium	<i>Lampranthus glaucus</i>
Medium	<i>Argyrolobium velutinum</i>
Medium	<i>Xiphotheca reflexa</i>
Medium	<i>Psoralea alata</i>
Medium	<i>Aspalathus lebeckioides</i>
Medium	<i>Aspalathus recurva</i>
Medium	<i>Aspalathus tyloides</i>
Medium	<i>Leucospermum rodolentum</i>
Medium	<i>Protea scolymocephala</i>
Medium	Sensitive species 599
Medium	<i>Elegia verreauxii</i>
Medium	<i>Restio paludosus</i>
Medium	<i>Restio rigoratus</i>
Medium	Sensitive species 500

Medium	Sensitive species 53
Medium	Sensitive species 654
Medium	Lachnaea capitata
Medium	Lachnaea grandiflora
Medium	Cotula pusilla
Medium	Sensitive species 1225

MAP OF RELATIVE TERRESTRIAL BIODIVERSITY THEME SENSITIVITY



Very High sensitivity	High sensitivity	Medium sensitivity	Low sensitivity
X			

Sensitivity Features:

Sensitivity	Feature(s)
Very High	CR_Cape Flats Sand Fynbos