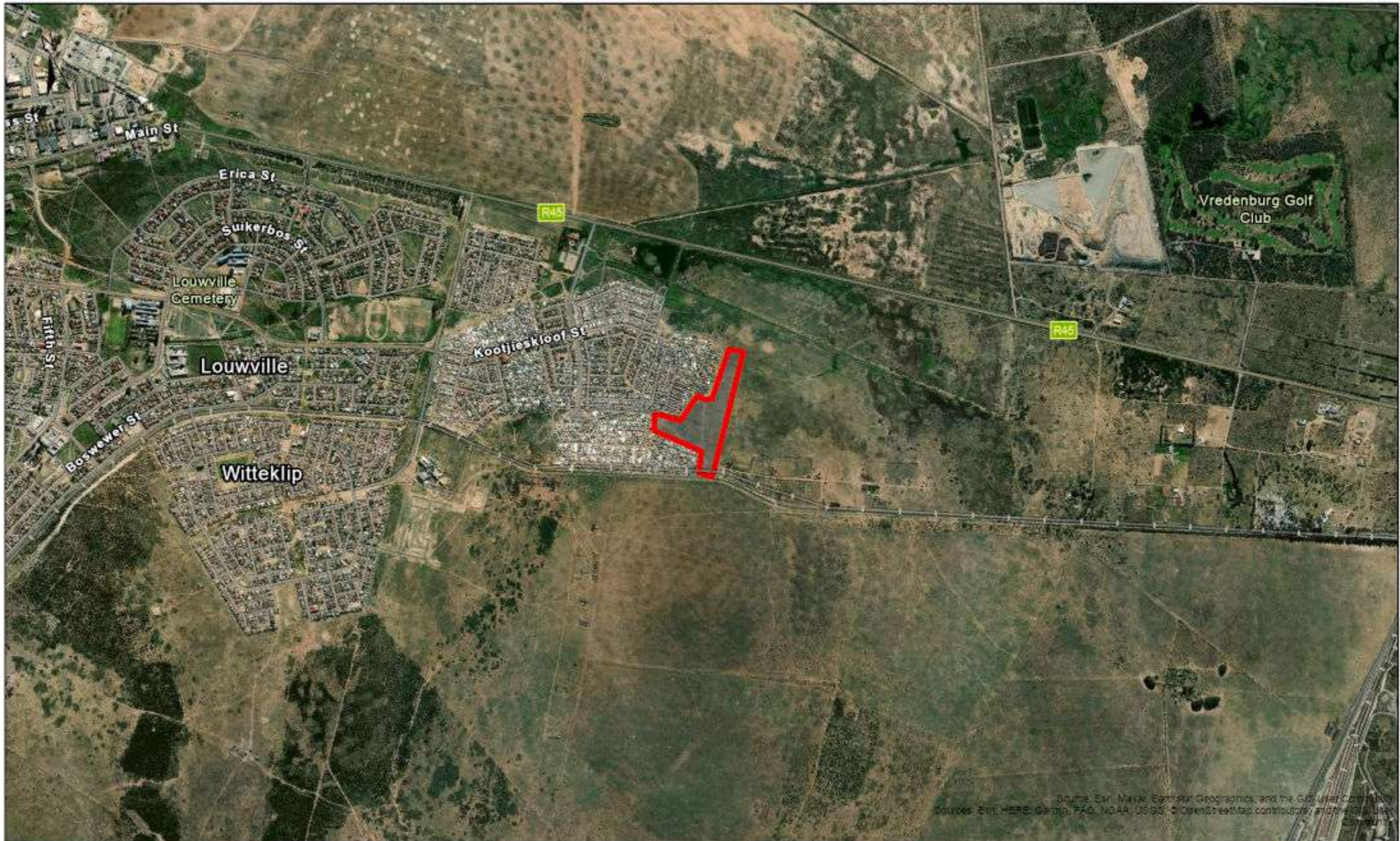
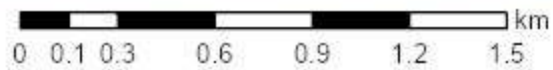


# Locality Map

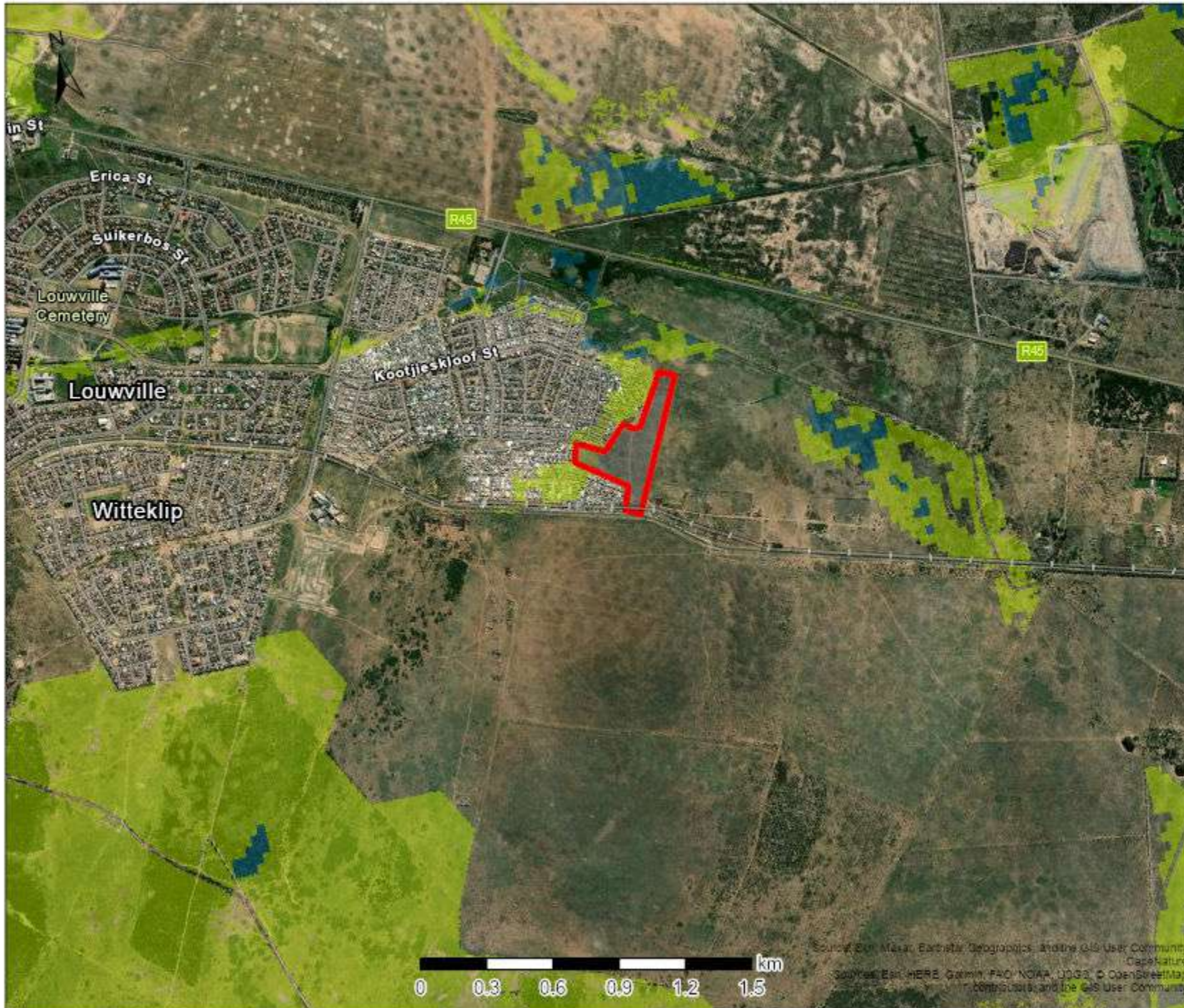


Source: Esri, Navteq, Earthstar Geographics, and the GIS User Community  
Sources: Esri, HERE, Garmin, FAO, NOAA, USGS, © OpenStreetMap contributors, and the GIS User Community

Date created: 2023/11/17



# Critical Biodiversity Overlay Map



## Legend

### BSP CBA

CBA: Terrestrial

CBA: Wetland

### BSP CBA: Degraded

CBA2: Terrestrial

Map Center: Lon: 18°1'38.8"E  
Lat: 32°55'28.4"S

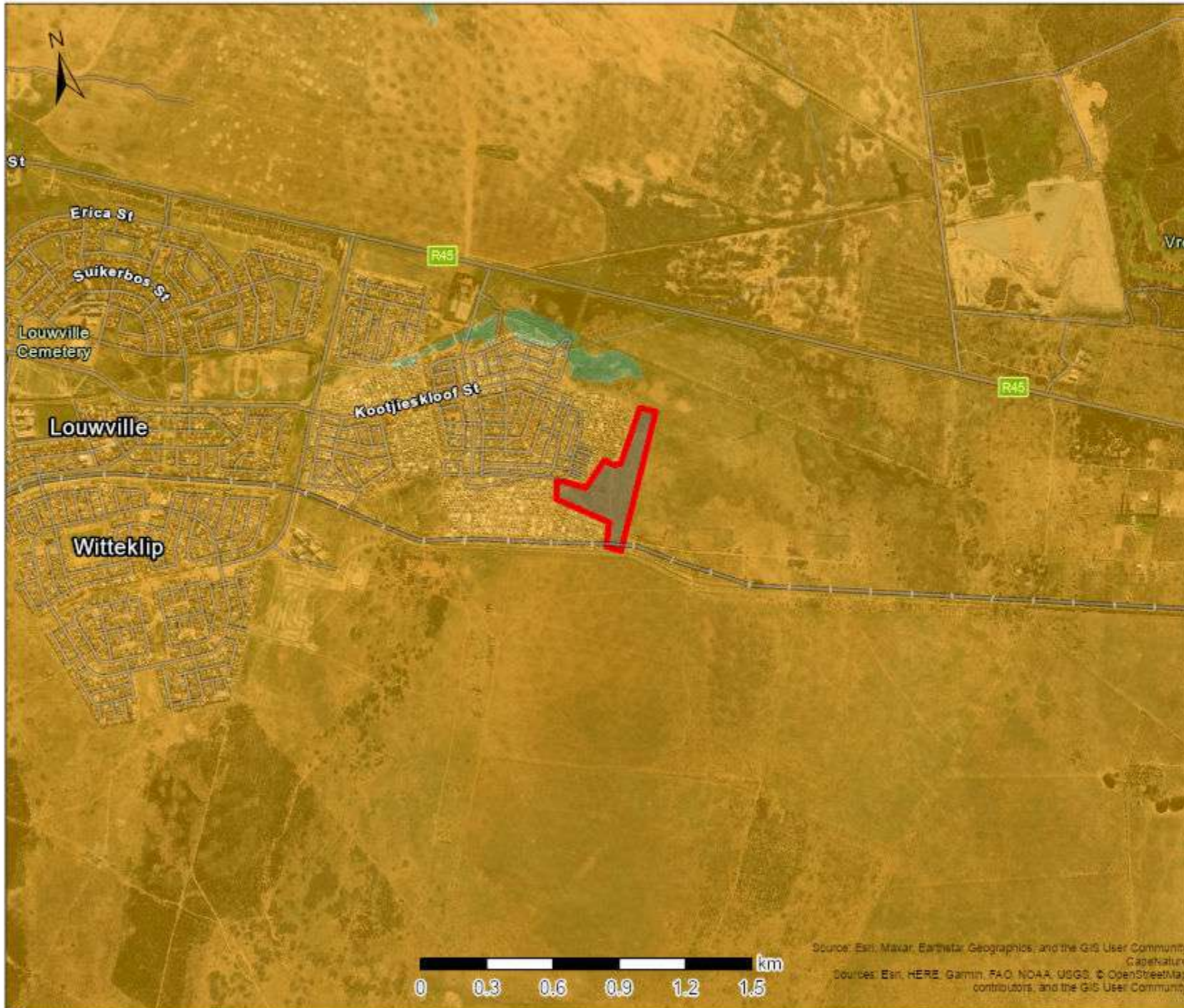
Scale: 1:25,000

Date created: 2023/17/11



Source: SANBI, Mosaic EarthData, Geographics, and the GIS User Community  
CapeNature  
Sources: Esri, HERE, Garmin, FAO, NOAA, USGS, © OpenStreetMap contributors, and the GIS User Community

# Ecosystem Threat Status Map



## Legend

### Ecosystem Threat Status 2016

Status

EN

LT

Map Center: Lon: 18°1'42.8"E  
Lat: 32°55'24.5"S

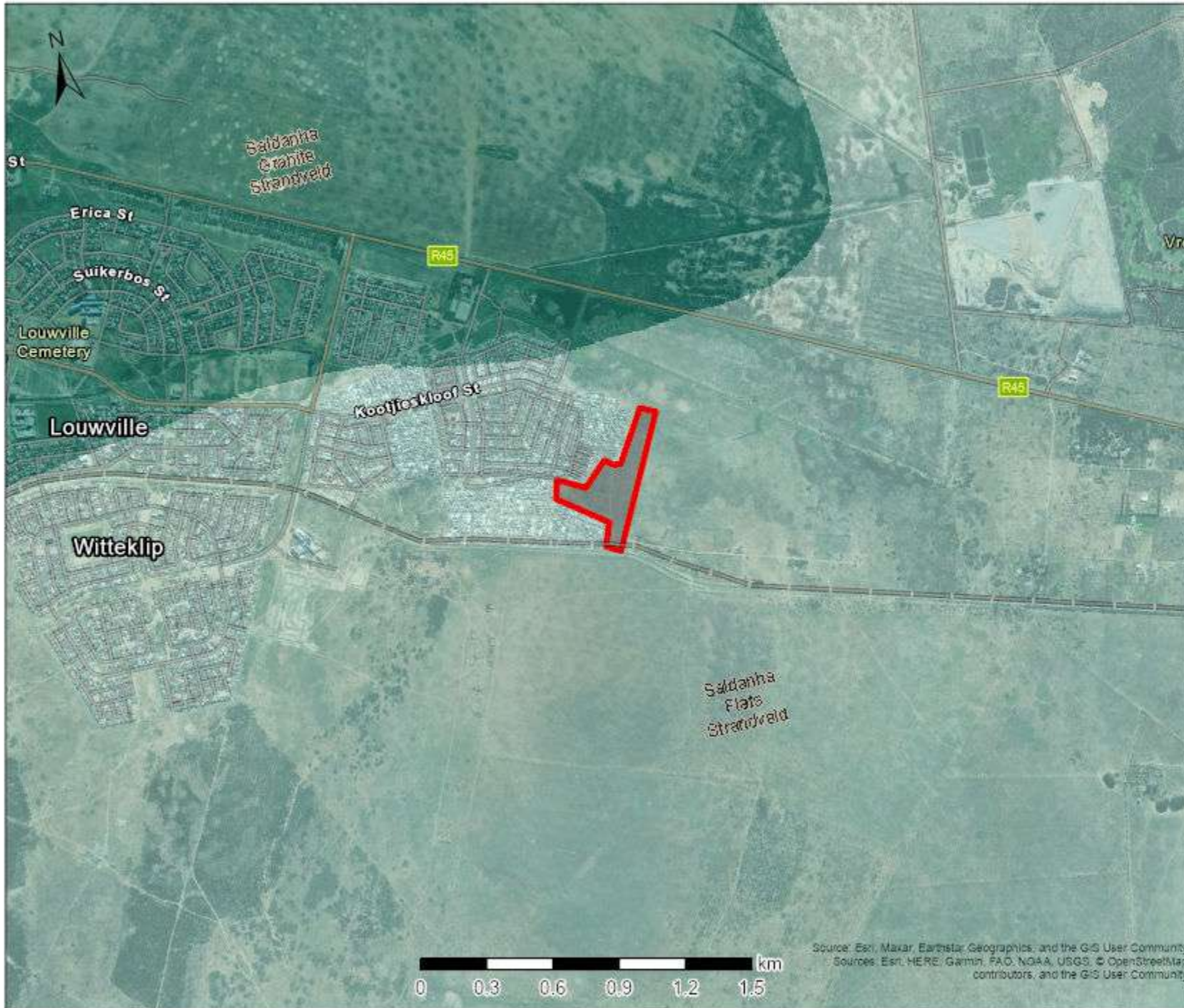
Scale: 1:25,000

Date created: 2023/17/11



Source: Esri, Maxar, Earthstar Geographics, and the GIS User Community  
CapeNature  
Sources: Esri, HERE, Garmin, FAO, NOAA, USGS, © OpenStreetMap contributors, and the GIS User Community

# Vegetation Map



## Legend

### VEGMAP 2018

- FS 2 Saldanha Granite Strandveld
- FS 3 Saldanha Flats Strandveld
- FS 4 Saldanha Limestone Strandveld

Map Center: Lon: 18°1'42.8"E  
Lat: 32°55'24.5"S

Scale: 1:25,000

Date created: 2023/17/11

Source: Esri, Maxar, Earthstar, Geographics, and the GIS User Community  
Sources: Esri, HERE, Garmin, FAO, NOAA, USGS, © OpenStreetMap contributors, and the GIS User Community

# Water Resources Map



## Legend

-  Dams
- Rivers**
  -  Non-Perennial
- Wetlands (NFEPA)**
  -  Artificial
  -  Natural

Map Center: Lon: 18°1'37.7"E  
Lat: 32°55'23"S  
Scale: 1:25,000  
Date created: 2023/17/11



Chief Directorate National Geospatial Information (DALRD)  
Source: Esri, Maxar, Earthstar Geographics, and the GIS User Community  
Source: Esri, HERE, Garmin, FAO, NOAA, USGS, © OpenStreetMap contributors, and the GIS User Community