

**SCREENING REPORT FOR AN ENVIRONMENTAL AUTHORIZATION AS
REQUIRED BY THE 2014 EIA REGULATIONS – PROPOSED SITE
ENVIRONMENTAL SENSITIVITY**

EIA Reference number: 023089

Project name: George Kerridge Housing Project

Project title: Housing Development Erf no. 8270 and P4 F132, Vredenburg

Date screening report generated: 17/02/2025 15:05:56

Applicant: Salanha Bay Municipality

Compiler: Sillito Environmental Consultants

Compiler signature:
.....

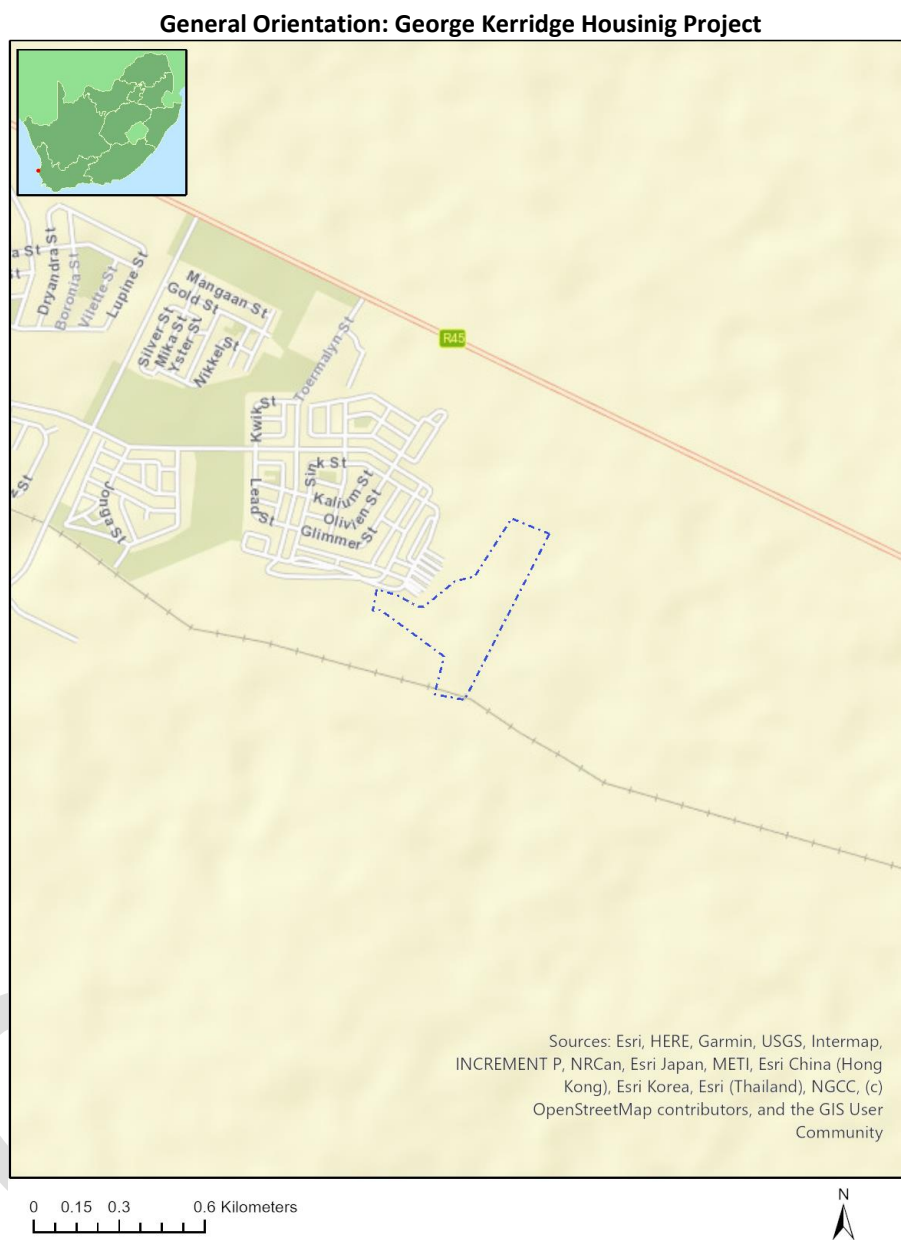
Application Category: Transformation of land | From agriculture or afforestation

Table of Contents

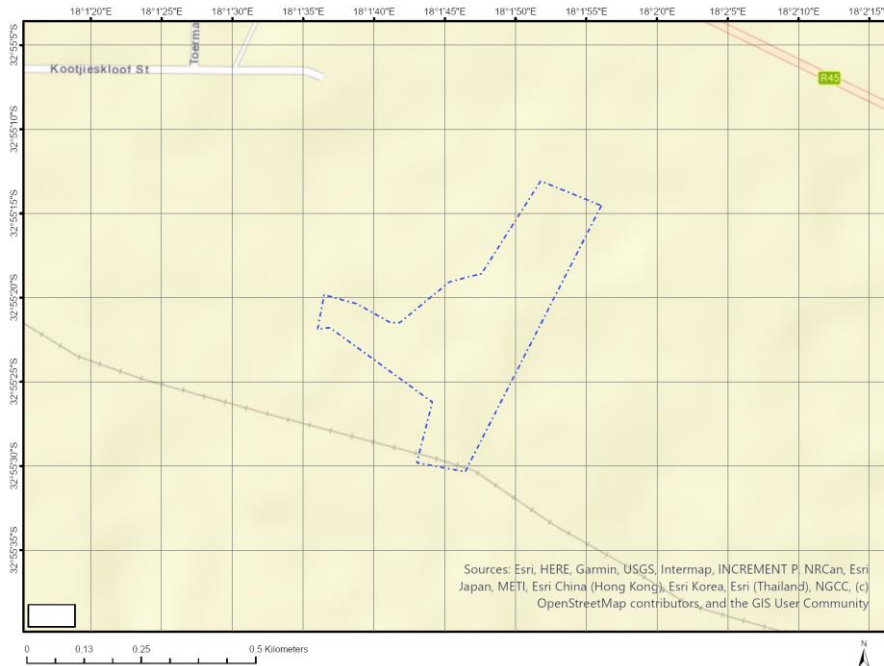
- Proposed Project Location 3
 - Orientation map 1: General location 3
- Map of proposed site and relevant area(s) 4
 - Cadastral details of the proposed site 4
 - Wind and Solar developments with an approved Environmental Authorisation or applications under consideration within 30 km of the proposed area 4
 - Environmental Management Frameworks relevant to the application 5
- Environmental screening results and assessment outcomes 5
 - Relevant development incentives, restrictions, exclusions or prohibitions 5
 - Proposed Development Area Environmental Sensitivity 5
 - Specialist assessments identified 6
- Results of the environmental sensitivity of the proposed area 8
 - MAP OF RELATIVE AGRICULTURE THEME SENSITIVITY 8
 - MAP OF RELATIVE ANIMAL SPECIES THEME SENSITIVITY 9
 - MAP OF RELATIVE AQUATIC BIODIVERSITY THEME SENSITIVITY 10
 - MAP OF RELATIVE ARCHAEOLOGICAL AND CULTURAL HERITAGE THEME SENSITIVITY 11
 - MAP OF RELATIVE CIVIL AVIATION THEME SENSITIVITY 12
 - MAP OF RELATIVE DEFENCE THEME SENSITIVITY 13
 - MAP OF RELATIVE PALEONTOLOGY THEME SENSITIVITY 14
 - MAP OF RELATIVE PLANT SPECIES THEME SENSITIVITY 15
 - MAP OF RELATIVE TERRESTRIAL BIODIVERSITY THEME SENSITIVITY 17

Proposed Project Location

Orientation map 1: General location



Map of proposed site and relevant area(s)



Cadastral details of the proposed site

Property details:

No	Farm Name	Farm/ Erf No	Portion	Latitude	Longitude	Property Type
1	VREDENBURG	8270	0	32°55'17.28S	18°1'58.86E	Erven
2	ONGEGUND	132	0	32°55'56.27S	18°1'39.03E	Farm
3	ONGEGUND	132	4	32°55'29.89S	18°1'59.85E	Farm Portion

Development footprint¹ vertices:
No development footprint(s) specified.

Wind and Solar developments with an approved Environmental Authorisation or applications under consideration within 30 km of the proposed area

No	EIA Reference No	Classification	Status of application	Distance from proposed area (km)
1	12/12/20/2126	Solar PV	Approved	10.6
2	14/12/16/3/3/2/1140	Solar PV	Approved	28
3	14/12/16/3/3/1/2348	Solar PV	Approved	28.4
4	14/12/16/3/3/2/2053	Solar PV	Approved	16.4
5	14/12/16/3/3/2/1057	Wind	Approved	11.3

¹ "development footprint", means the area within the site on which the development will take place and includes all ancillary developments for example roads, power lines, boundary walls, paving etc. which require vegetation clearance or which will be disturbed and for which the application has been submitted.

6	12/12/20/1781/AM3	Wind	Approved	5.8
7	12/12/20/2126/AM7	Solar PV	Approved	11.9
8	14/12/16/3/3/2/1144	Solar PV	Approved	22.9
9	12/12/20/1781/A1	Wind	Approved	5.8
10	12/12/20/2157	Wind	Approved	10.5
11	12/12/20/2126/AM5	Solar PV	Approved	11.9
12	14/12/16/3/3/2/2020	Solar PV	Approved	4.3
13	12/12/20/2626	Solar PV	Approved	1.8
14	14/12/16/3/3/1/2108	Wind	Approved	9.8
15	12/12/20/2126/1	Solar PV	Approved	11.9
16	14/12/16/3/3/2/1031	Solar PV	Approved	2.4
17	12/12/20/1781	Wind	Approved	5.8
18	12/12/20/2339	Wind	Approved	6.5
19	12/12/20/1581	Wind	Approved	8.8
20	12/12/20/2126/1/AM2	Solar PV	Approved	11.9
21	12/12/20/2126/1/AM5	Solar PV	Approved	11.9
22	12/12/20/1581/A3	Wind	Approved	8.8
23	12/12/20/2126/AM2	Solar PV	Approved	11.9
24	12/12/20/2126/AM6	Solar PV	Approved	11.9
25	12/12/20/1781/AM2	Wind	Approved	5.8
26	12/12/20/2625	Solar PV	Approved	2.3

Environmental Management Frameworks relevant to the application

No intersections with EMF areas found.

Environmental screening results and assessment outcomes

The following sections contain a summary of any development incentives, restrictions, exclusions or prohibitions that apply to the proposed development site as well as the most environmental sensitive features on the site based on the site sensitivity screening results for the application classification that was selected. The application classification selected for this report is:

Transformation of land | From agriculture or afforestation.

Relevant development incentives, restrictions, exclusions or prohibitions

The following development incentives, restrictions, exclusions or prohibitions and their implications that apply to this site are indicated below.

Incentive, restriction or prohibition	Implication
Strategic Transmission Corridor-Western corridor	https://screening.environment.gov.za/ScreeningDownloads/DevelopmentZones/Combined_EGI.pdf

Proposed Development Area Environmental Sensitivity

The following summary of the development site environmental sensitivities is identified. Only the highest environmental sensitivity is indicated. The footprint environmental sensitivities for the proposed development footprint as identified, are indicative only and must be verified on site by a suitably qualified person before the specialist assessments identified below can be confirmed.

Theme	Very High sensitivity	High sensitivity	Medium sensitivity	Low sensitivity
Agriculture Theme			X	
Animal Species Theme				X
Aquatic Biodiversity Theme				X
Archaeological and Cultural Heritage Theme				X
Civil Aviation Theme		X		
Defence Theme			X	
Paleontology Theme	X			
Plant Species Theme			X	
Terrestrial Biodiversity Theme	X			

Specialist assessments identified

Based on the selected classification, and the known impacts associated with the proposed development, the following list of specialist assessments have been identified for inclusion in the assessment report. It is the responsibility of the EAP to confirm this list and to motivate in the assessment report, the reason for not including any of the identified specialist study including the provision of photographic evidence of the site situation.

No	Specialist assessment	Assessment Protocol
1	Agricultural Impact Assessment	https://screening.environment.gov.za/ScreeningDownloads/AssessmentProtocols/Gazetted_General_Agriculture_Assessment_Protocols.pdf
2	Landscape/Visual Impact Assessment	https://screening.environment.gov.za/ScreeningDownloads/AssessmentProtocols/Gazetted_General_Requirement_Assessment_Protocols.pdf
3	Archaeological and Cultural Heritage Impact Assessment	https://screening.environment.gov.za/ScreeningDownloads/AssessmentProtocols/Gazetted_General_Requirement_Assessment_Protocols.pdf
4	Palaeontology Impact Assessment	https://screening.environment.gov.za/ScreeningDownloads/AssessmentProtocols/Gazetted_General_Requirement_Assessment_Protocols.pdf
5	Terrestrial Biodiversity Impact Assessment	https://screening.environment.gov.za/ScreeningDownloads/AssessmentProtocols/Gazetted_Terrestrial_Biodiversity_Assessment_Protocols.pdf
6	Aquatic Biodiversity Impact Assessment	https://screening.environment.gov.za/ScreeningDownloads/AssessmentProtocols/Gazetted_Aquatic_Biodiversity_Assessment_Protocols.pdf
7	Hydrology Assessment	https://screening.environment.gov.za/ScreeningDownloads/AssessmentProtocols/Gazetted_General_Requirement_Assessment_Protocols.pdf
8	Socio-Economic Assessment	https://screening.environment.gov.za/ScreeningDownloads/AssessmentProtocols/Gazetted_General_Requirement_Assessment_Protocols.pdf
9	Plant Species Assessment	https://screening.environment.gov.za/ScreeningDownloads/AssessmentProtocols/Gazetted_Plant_Species_Assessment_Protocols.pdf

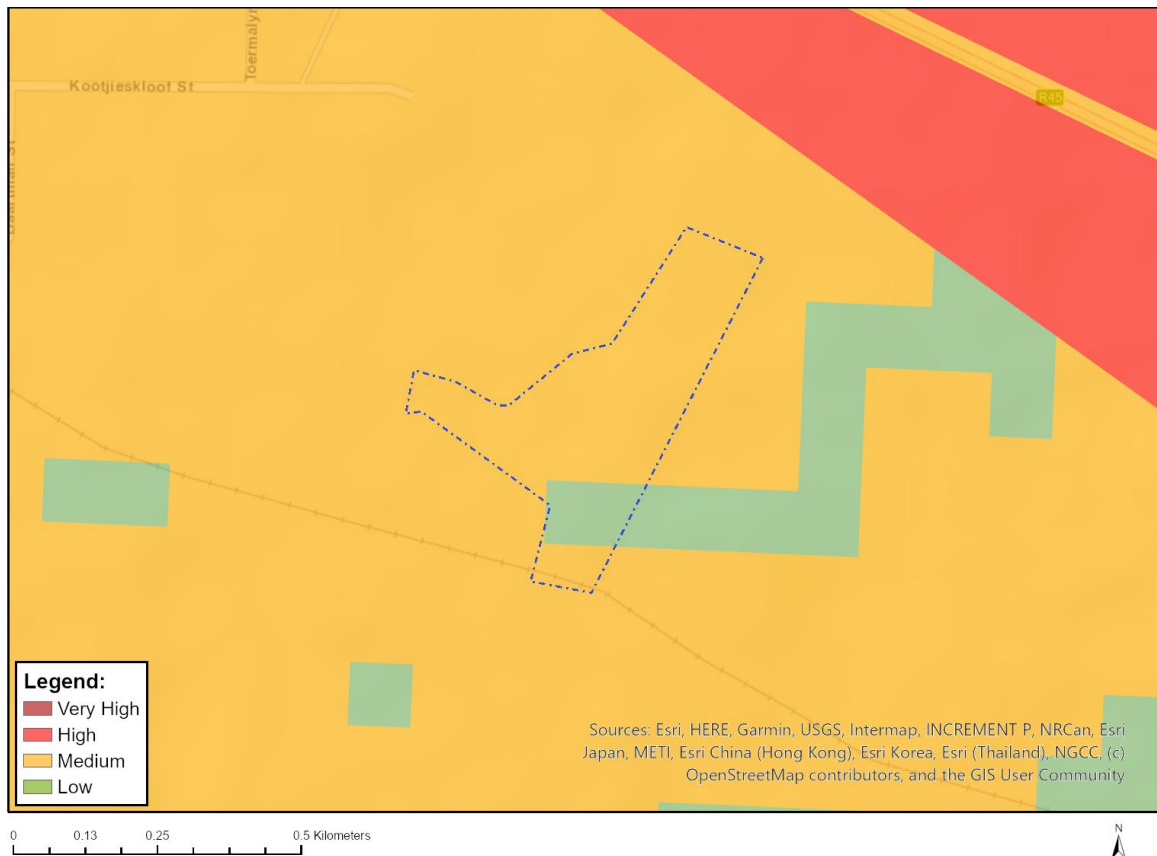
10	Animal Species Assessment	https://screening.environment.gov.za/ScreeningDownloads/AssessmentProtocols/Gazetted Animal Species Assessment Protocols.pdf
----	---------------------------	---

OFFICIAL

Results of the environmental sensitivity of the proposed area.

The following section represents the results of the screening for environmental sensitivity of the proposed site for relevant environmental themes associated with the project classification. It is the duty of the EAP to ensure that the environmental themes provided by the screening tool are comprehensive and complete for the project. Refer to the disclaimer.

MAP OF RELATIVE AGRICULTURE THEME SENSITIVITY

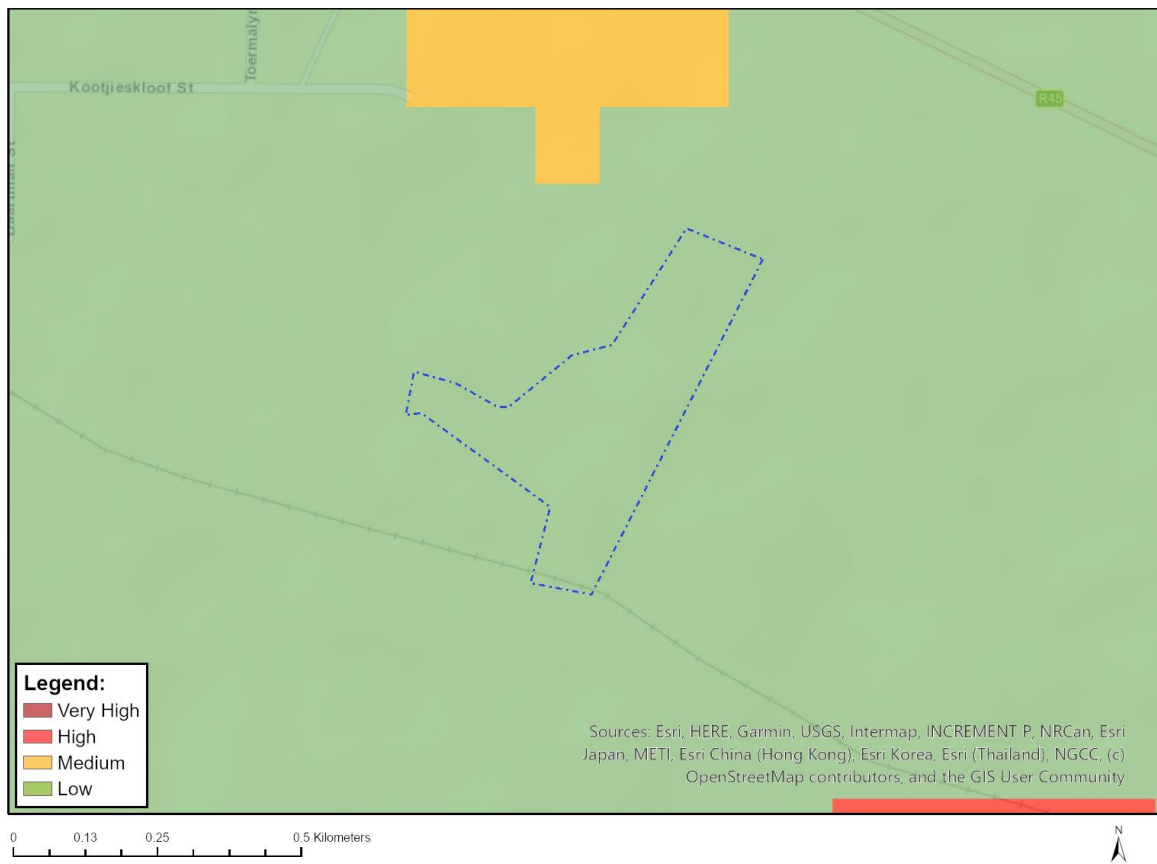


Very High sensitivity	High sensitivity	Medium sensitivity	Low sensitivity
		X	

Sensitivity Features:

Sensitivity	Feature(s)
Low	Land capability;01. Very low/02. Very low/03. Low-Very low/04. Low-Very low/05. Low
Medium	Land capability;06. Low-Moderate/07. Low-Moderate/08. Moderate

MAP OF RELATIVE ANIMAL SPECIES THEME SENSITIVITY



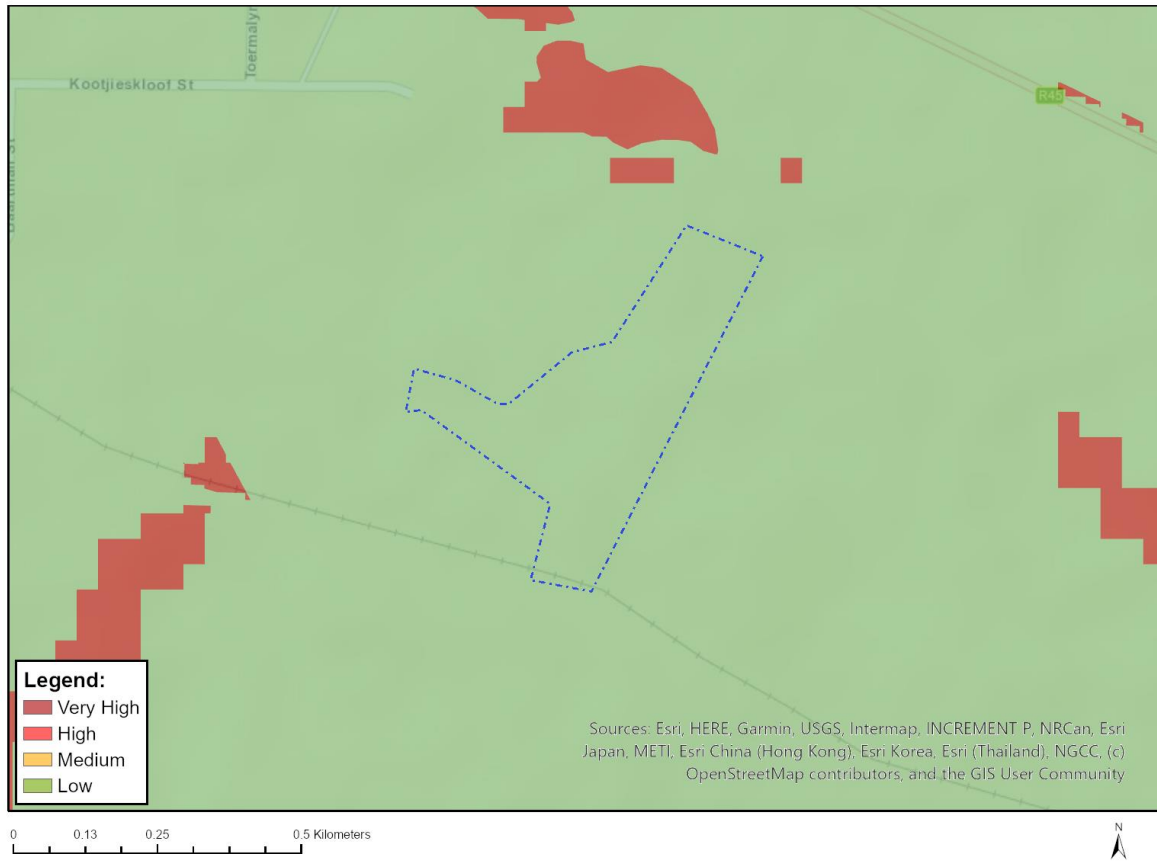
Where only a sensitive plant unique number or sensitive animal unique number is provided in the screening report and an assessment is required, the environmental assessment practitioner (EAP) or specialist is required to email SANBI at eiadatarequests@sanbi.org.za listing all sensitive species with their unique identifiers for which information is required. The name has been withheld as the species may be prone to illegal harvesting and must be protected. SANBI will release the actual species name after the details of the EAP or specialist have been documented.

Very High sensitivity	High sensitivity	Medium sensitivity	Low sensitivity
			X

Sensitivity Features:

Sensitivity	Feature(s)
Low	Subject to confirmation

MAP OF RELATIVE AQUATIC BIODIVERSITY THEME SENSITIVITY



Very High sensitivity	High sensitivity	Medium sensitivity	Low sensitivity
			X

Sensitivity Features:

Sensitivity	Feature(s)
Low	Low sensitivity

MAP OF RELATIVE ARCHAEOLOGICAL AND CULTURAL HERITAGE THEME SENSITIVITY



Very High sensitivity	High sensitivity	Medium sensitivity	Low sensitivity
			X

Sensitivity Features:

Sensitivity	Feature(s)
Low	Low sensitivity

MAP OF RELATIVE CIVIL AVIATION THEME SENSITIVITY

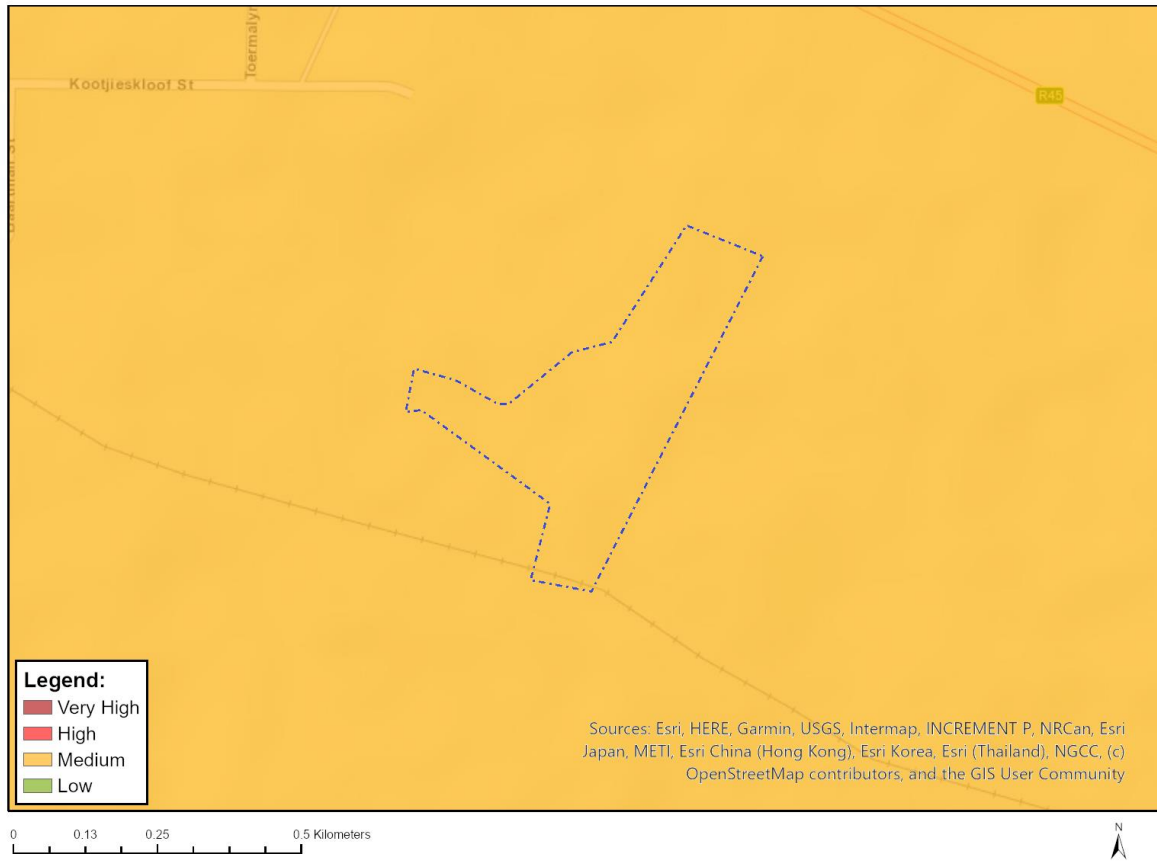


Very High sensitivity	High sensitivity	Medium sensitivity	Low sensitivity
	X		

Sensitivity Features:

Sensitivity	Feature(s)
High	Within 8 km of other civil aviation aerodrome
High	Dangerous and restricted airspace as demarcated

MAP OF RELATIVE DEFENCE THEME SENSITIVITY



Very High sensitivity	High sensitivity	Medium sensitivity	Low sensitivity
		X	

Sensitivity Features:

Sensitivity	Feature(s)
Medium	Military and Defence Site

MAP OF RELATIVE PALEONTOLOGY THEME SENSITIVITY

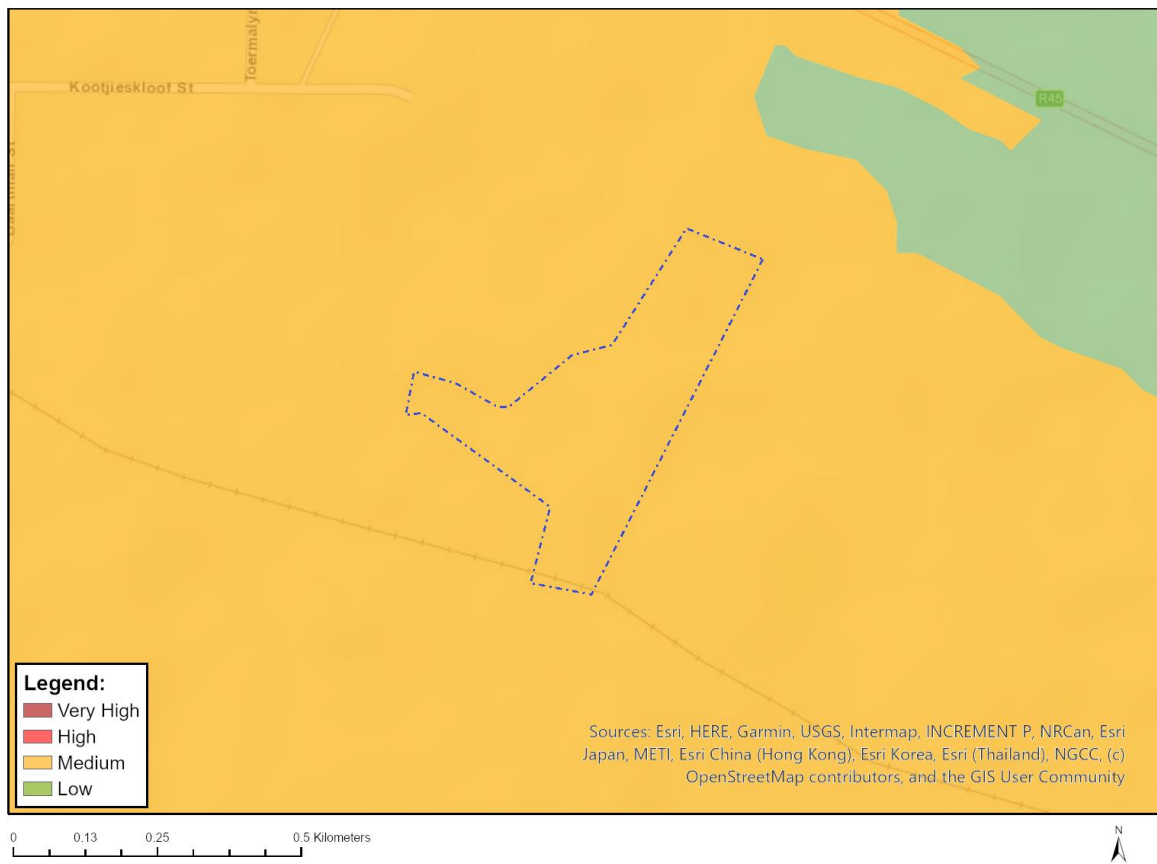


Very High sensitivity	High sensitivity	Medium sensitivity	Low sensitivity
X			

Sensitivity Features:

Sensitivity	Feature(s)
Low	Features with a Low paleontological sensitivity
Very High	Features with a Very High paleontological sensitivity

MAP OF RELATIVE PLANT SPECIES THEME SENSITIVITY



Where only a sensitive plant unique number or sensitive animal unique number is provided in the screening report and an assessment is required, the environmental assessment practitioner (EAP) or specialist is required to email SANBI at eiadatarequests@sanbi.org.za listing all sensitive species with their unique identifiers for which information is required. The name has been withheld as the species may be prone to illegal harvesting and must be protected. SANBI will release the actual species name after the details of the EAP or specialist have been documented.

Very High sensitivity	High sensitivity	Medium sensitivity	Low sensitivity
		X	

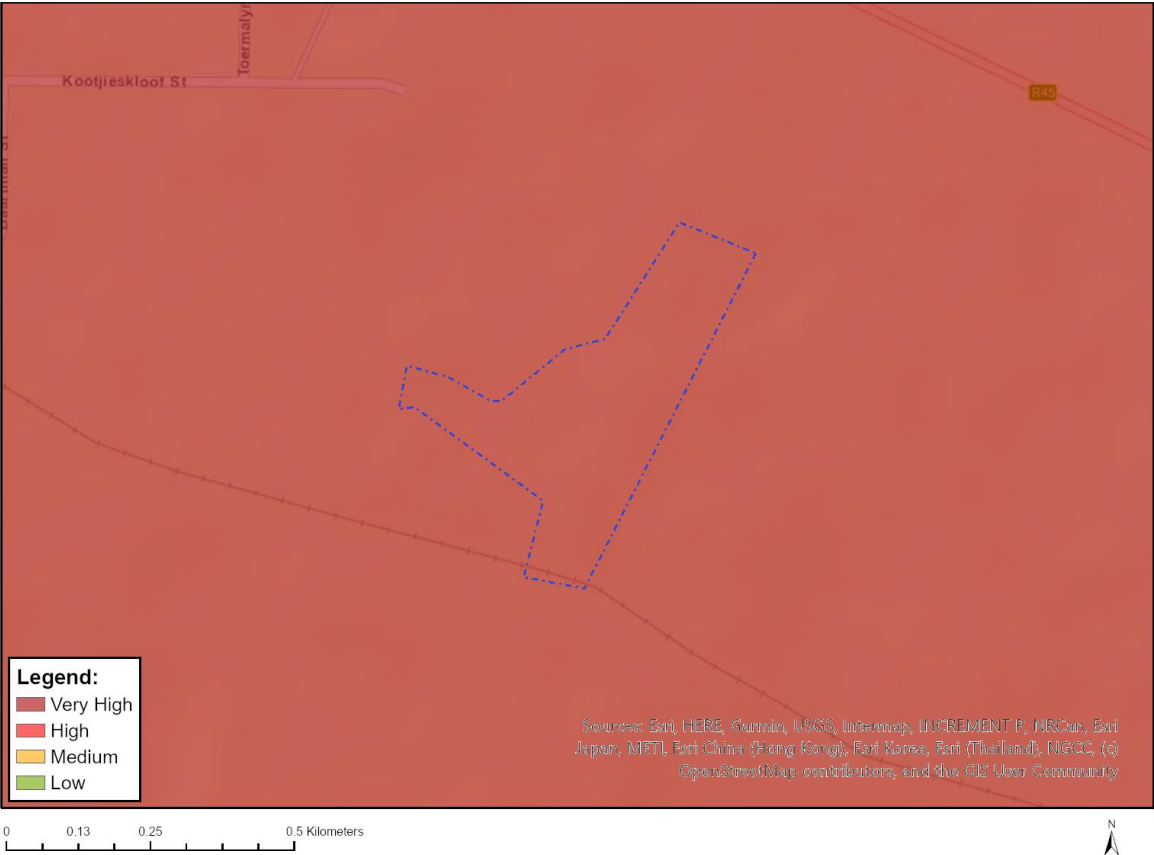
Sensitivity Features:

Sensitivity	Feature(s)
Medium	Lampranthus aureus
Medium	Sensitive species 244
Medium	Antimima limbata
Medium	Antimima aristulata
Medium	Ruschia cupulata
Medium	Ruschia langebaanensis
Medium	Drosanthemum hispifolium
Medium	Oscularia vredenburgensis
Medium	Cephalophyllum rostellum
Medium	Indigofera platypoda
Medium	Aspalathus lotoides subsp. lagopus
Medium	Aspalathus lotoides subsp. lotoides
Medium	Aspalathus pinguis subsp. occidentalis

Medium	<i>Aspalathus stricticlada</i>
Medium	<i>Otholobium venustum</i>
Medium	<i>Wiborgia fusca</i> subsp. <i>macrocarpa</i>
Medium	<i>Podalyria sericea</i>
Medium	<i>Leucospermum hypophyllocarpodendron</i> subsp. <i>canaliculatum</i>
Medium	<i>Manulea augei</i>
Medium	<i>Manulea corymbosa</i>
Medium	<i>Diascia collina</i>
Medium	<i>Echiostachys spicatus</i>
Medium	<i>Geissorhiza lewisiae</i>
Medium	<i>Sparaxis parviflora</i>
Medium	<i>Ixia purpureorosea</i>
Medium	Sensitive species 881
Medium	Sensitive species 816
Medium	<i>Romulea barkerae</i>
Medium	<i>Romulea saldanhensis</i>
Medium	Sensitive species 557
Medium	<i>Ferraria densepunctulata</i>
Medium	<i>Ferraria parva</i>
Medium	<i>Pauridia longituba</i>
Medium	<i>Pauridia linearis</i>
Medium	<i>Empodium veratrifolium</i>
Medium	<i>Oxalis burtoniae</i>
Medium	<i>Oxalis suavis</i>
Medium	<i>Oxalis subsessilis</i>
Medium	<i>Hermannia procumbens</i> subsp. <i>myrrhifolia</i>
Medium	Sensitive species 222
Medium	Sensitive species 93
Medium	<i>Galenia crystallina</i> var. <i>maritima</i>
Medium	<i>Hessea mathewsii</i>
Medium	Sensitive species 840
Medium	Sensitive species 1243
Medium	<i>Anisodonteia biflora</i>
Medium	<i>Cynanchum zeyheri</i>
Medium	<i>Felicia elongata</i>
Medium	<i>Steirodiscus tagetes</i>
Medium	<i>Cotula duckittiae</i>
Medium	<i>Cotula eckloniana</i>
Medium	<i>Osteospermum calcicola</i>
Medium	<i>Helichrysum bachmannii</i>
Medium	<i>Agathosma thymifolia</i>
Medium	<i>Limonium acuminatum</i>
Medium	<i>Muraltia harveyana</i>
Medium	<i>Muraltia macropetala</i>
Medium	Sensitive species 333
Medium	Sensitive species 470
Medium	Sensitive species 156
Medium	Sensitive species 616
Medium	<i>Phylica greyii</i>
Medium	<i>Phylica stenopetala</i> var. <i>stenopetala</i>
Medium	<i>Wiborgiella dahlgrenii</i>
Medium	<i>Ezoloba macrocarpa</i>
Medium	<i>Argyrobium velutinum</i>
Medium	<i>Xiphotheca reflexa</i>
Medium	<i>Aspalathus recurva</i>
Medium	<i>Leucospermum rodolentum</i>
Medium	Sensitive species 599
Medium	<i>Cotula pusilla</i>
Medium	<i>Helichrysum dunense</i>
Medium	<i>Muraltia obovata</i>

Medium	Sensitive species 1225
--------	------------------------

MAP OF RELATIVE TERRESTRIAL BIODIVERSITY THEME SENSITIVITY



Very High sensitivity	High sensitivity	Medium sensitivity	Low sensitivity
X			

Sensitivity Features:

Sensitivity	Feature(s)
Very High	ESA 1
Very High	CBA 1: Terrestrial
Very High	EN_Saldanha Flats Strandveld